

WHALE ROBOT in aquarium ; water purifying

2-1 CAD PROJECT - 불나방

PROF. MIN SEUNGJAE

2011012186 KIM DAEHYUN

2011012357 YEON KYUHWAN

2011012432 LEE HONGKYU



CONTEXT

Necessity for our work

Front part of model
with reference materials

Rear part of model
with reference materials

Summary , Q&A

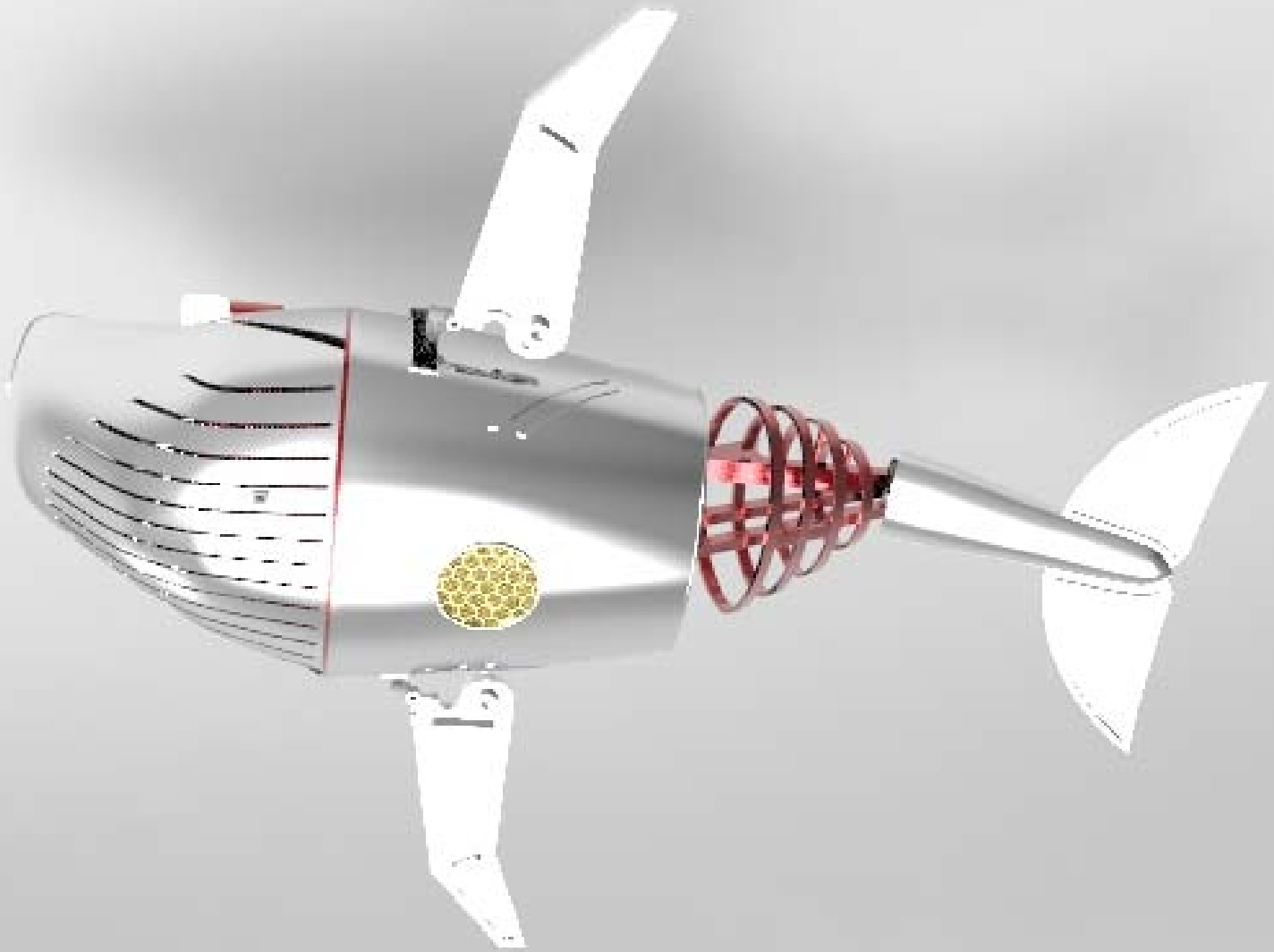
Necessity for our work

o1 How to clean aquarium?



Necessity for our work
o2 In aquarium







CONTEXT

Necessity for our work

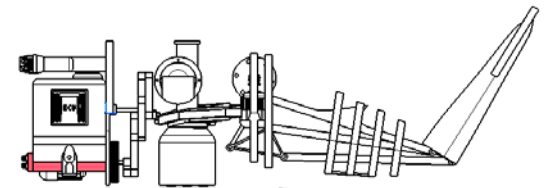
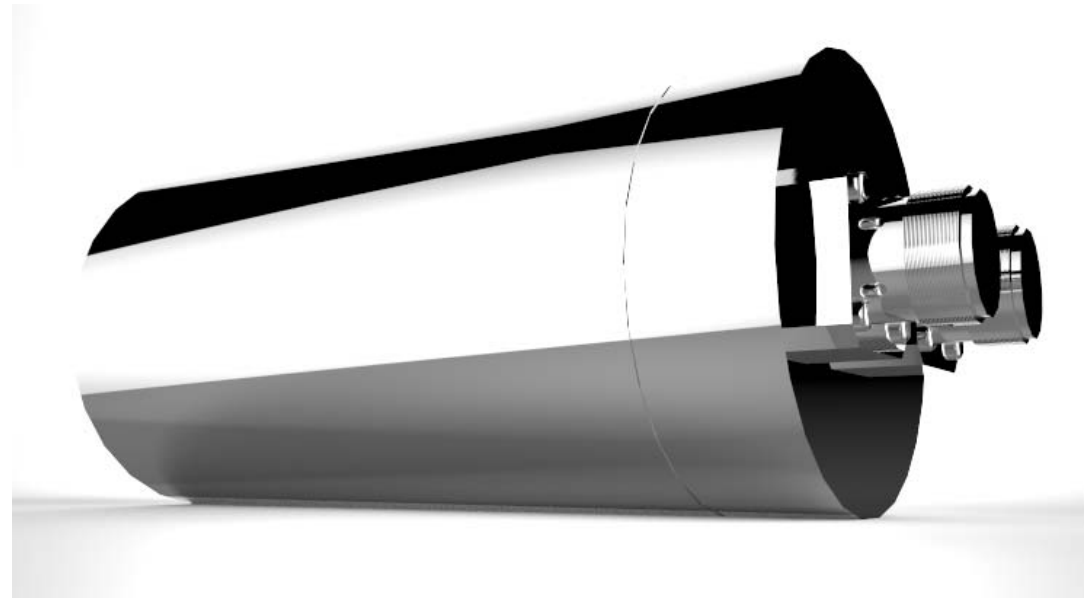
**Front part of model
with reference materials**

Rear part of model
with reference materials

Summary , Q&A

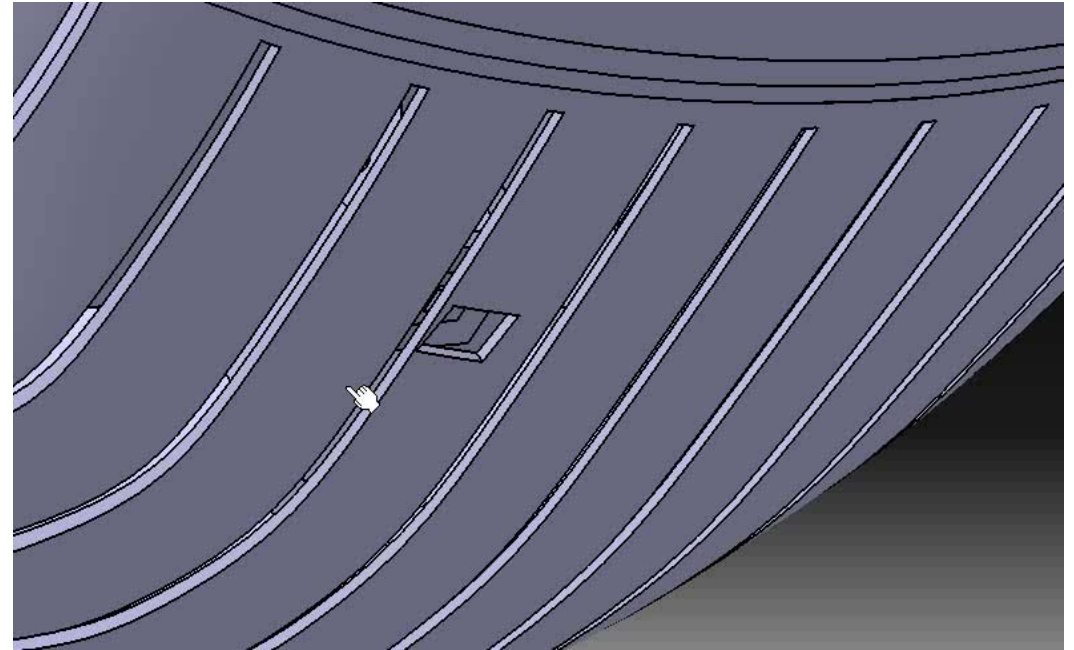
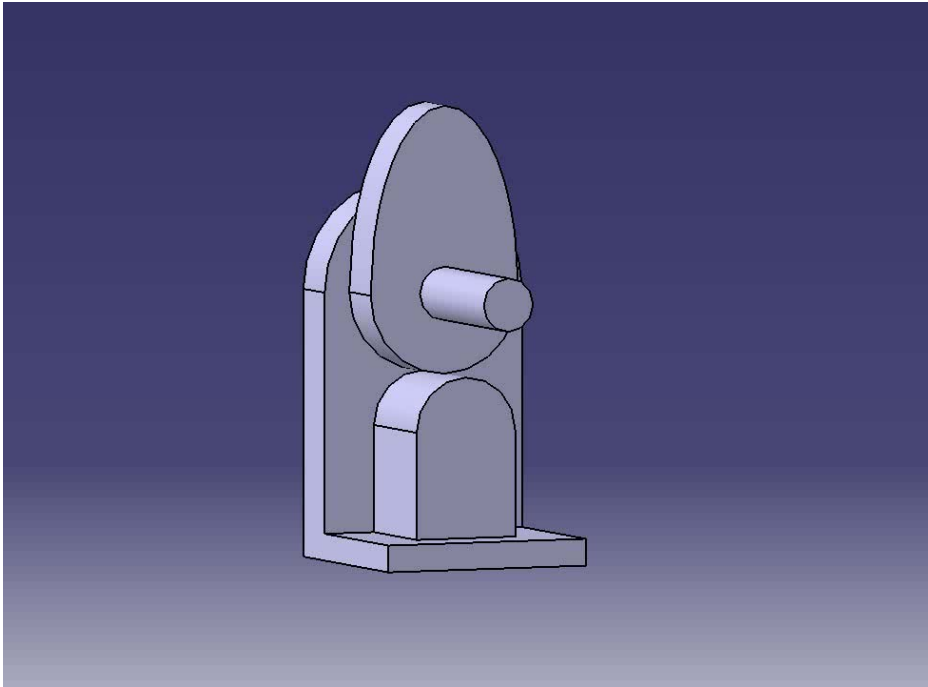
Front part of model
with reference materials

01 Battery

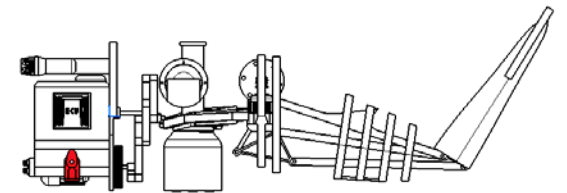


Front part of model
with reference materials

o2 charging system; kinematics

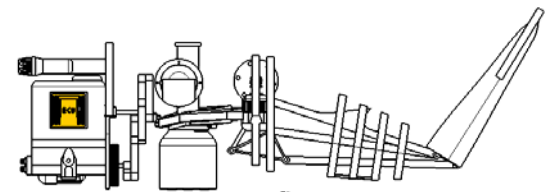


prismatic joint, revolute joint + slide curve



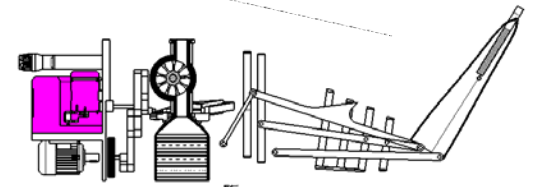
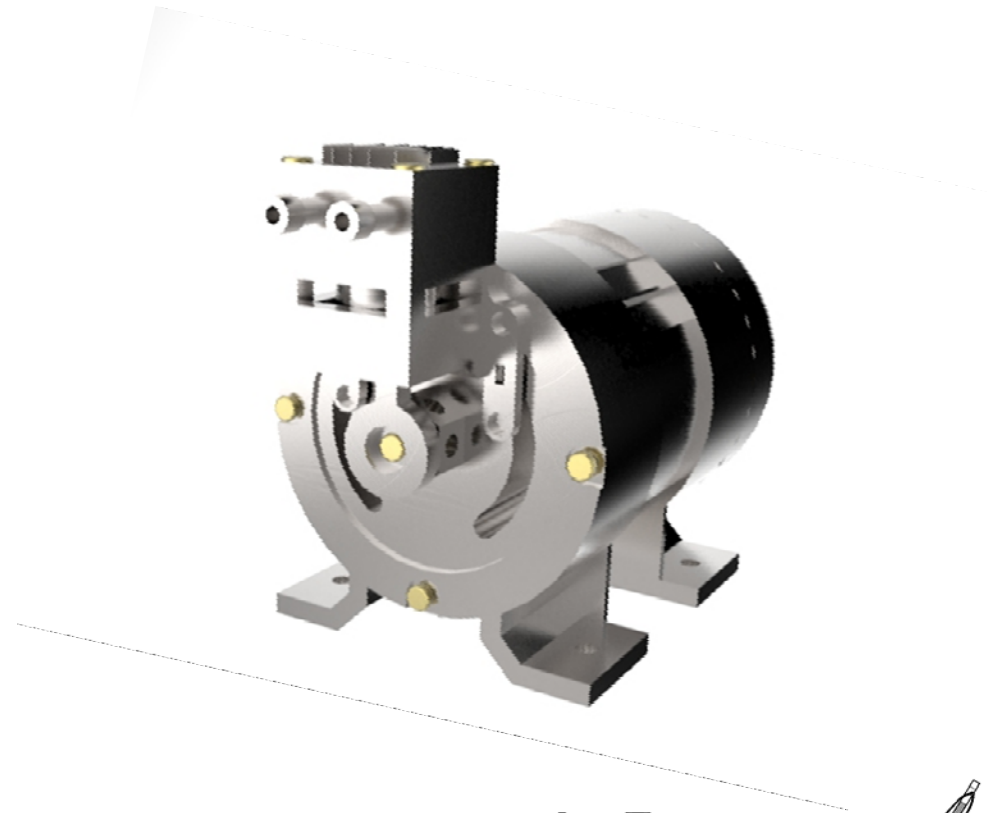
Front part of model
with reference materials

03 ECU



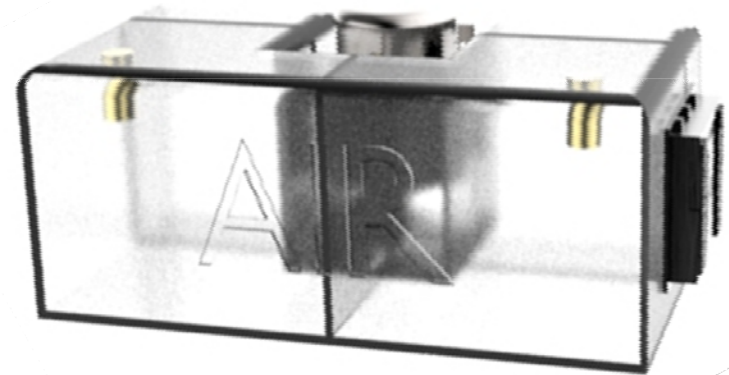
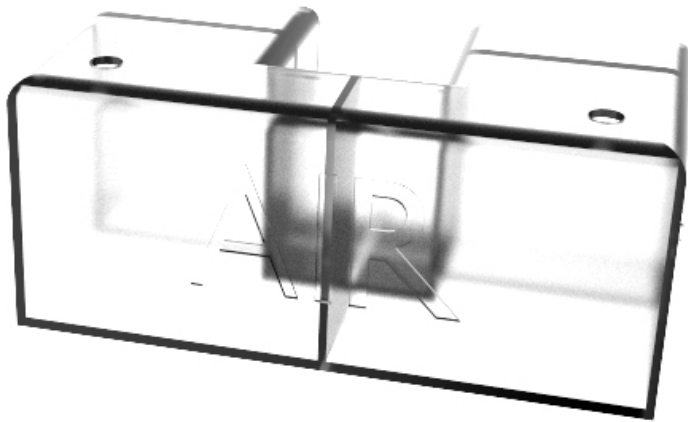
Front part of model
with reference materials

04 Air compressor



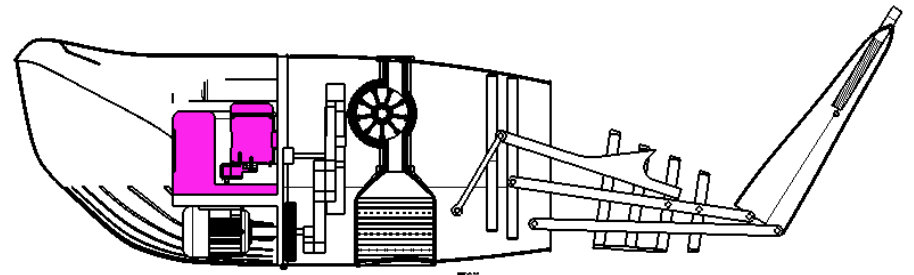
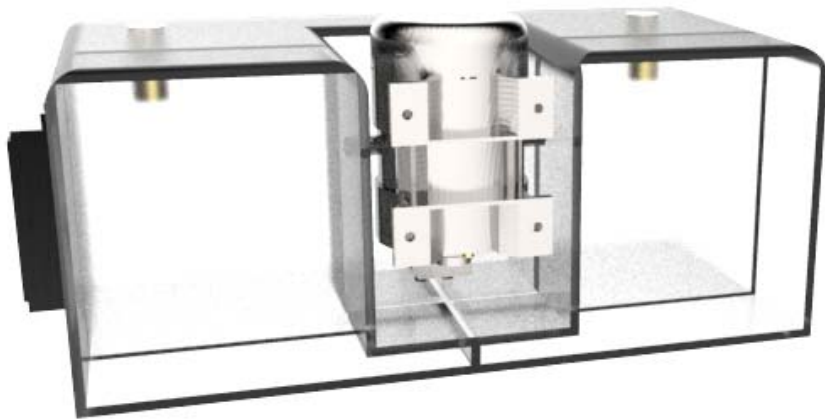
Front part of model
with reference materials

05 Air bladder



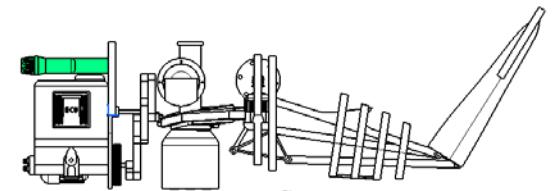
Front part of model
with reference materials

o6 Air bladder system



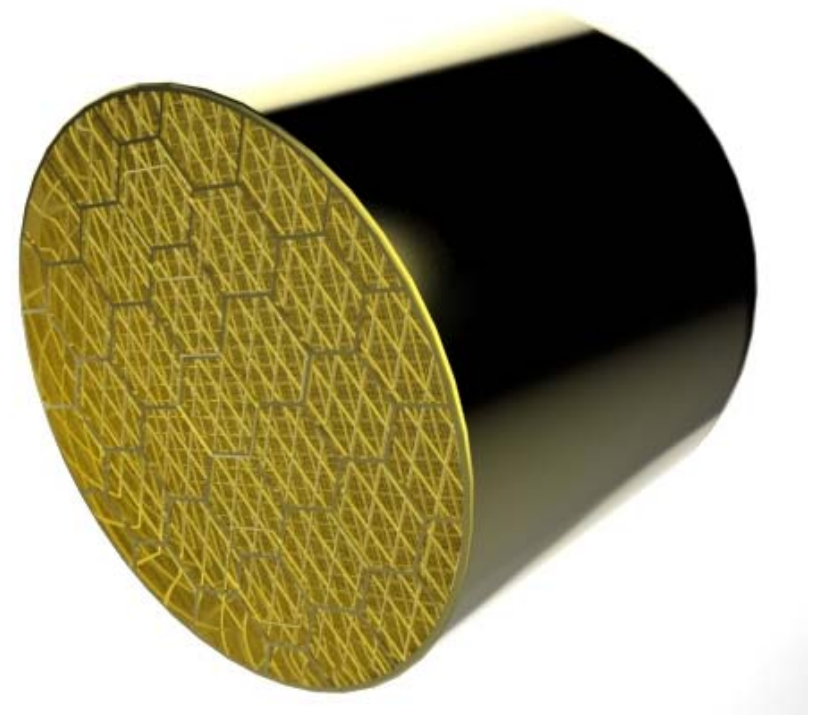
Front part of model
with reference materials

07 Eye



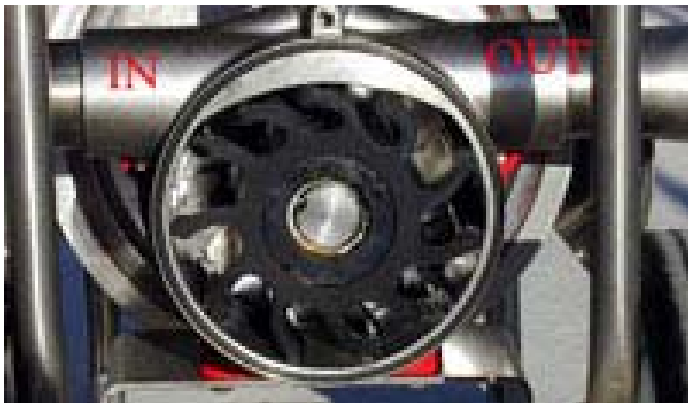
Front part of model
with reference materials

o8 filter



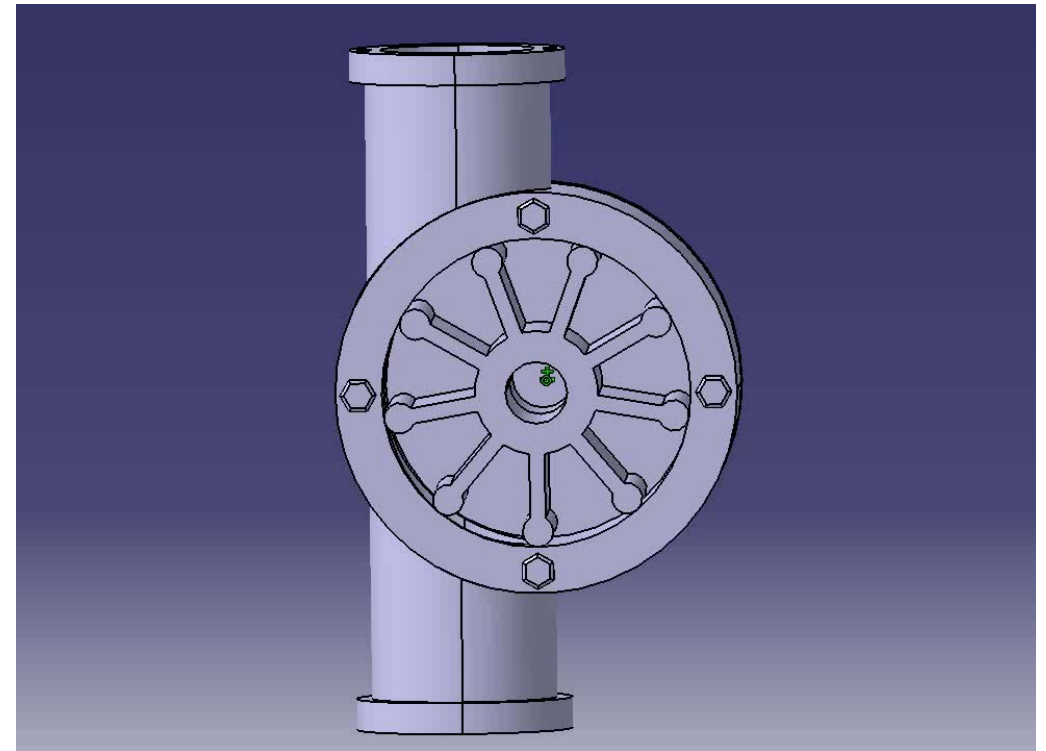
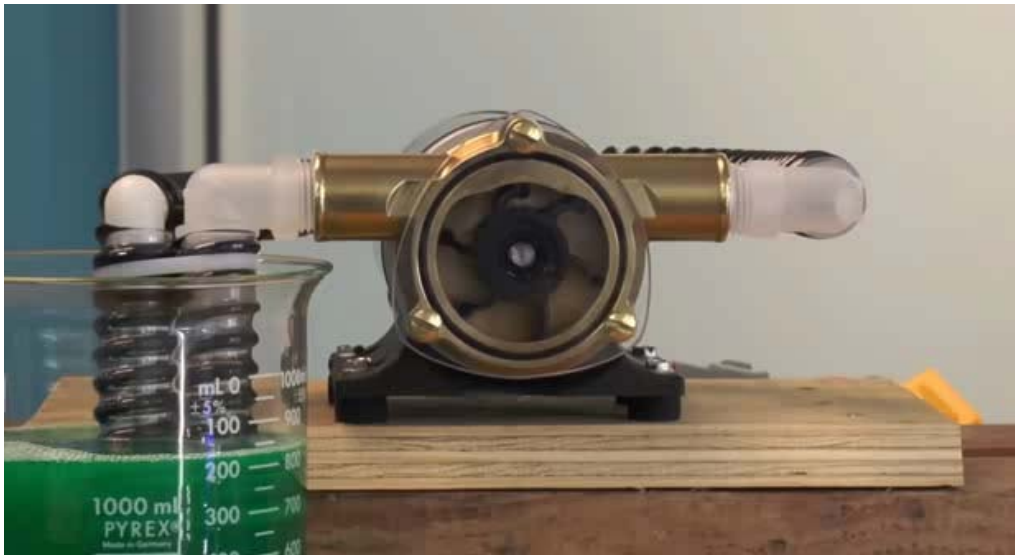
Front part of model
with reference materials

09 Impeller pump



Front part of model
with reference materials

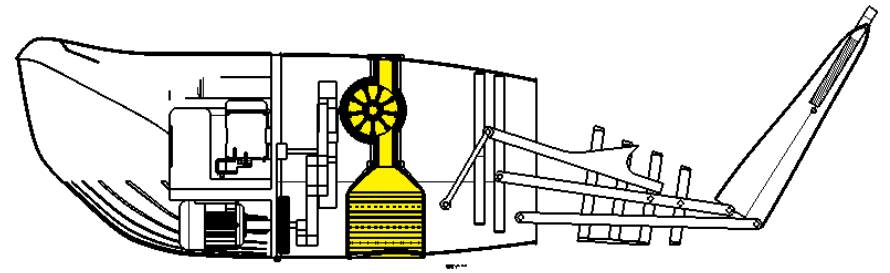
10 impeller pump; kinematics



Revolute joint in law

Front part of model
with reference materials

11 filter system





CONTEXT

Necessity for our work

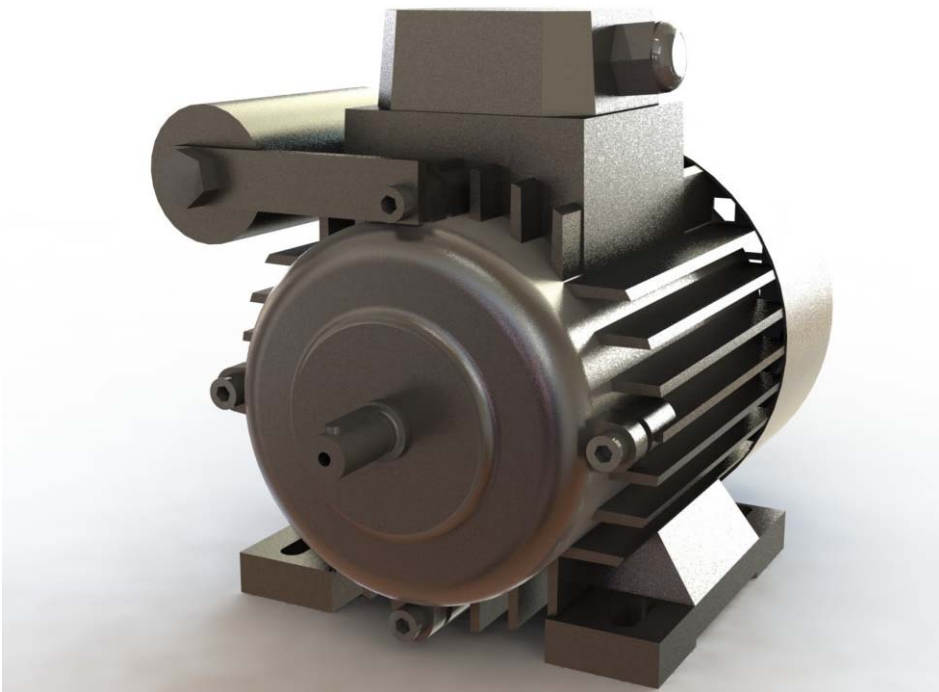
Front part of model
with reference materials

**Rear part of model
with reference materials**

Summary , Q&A

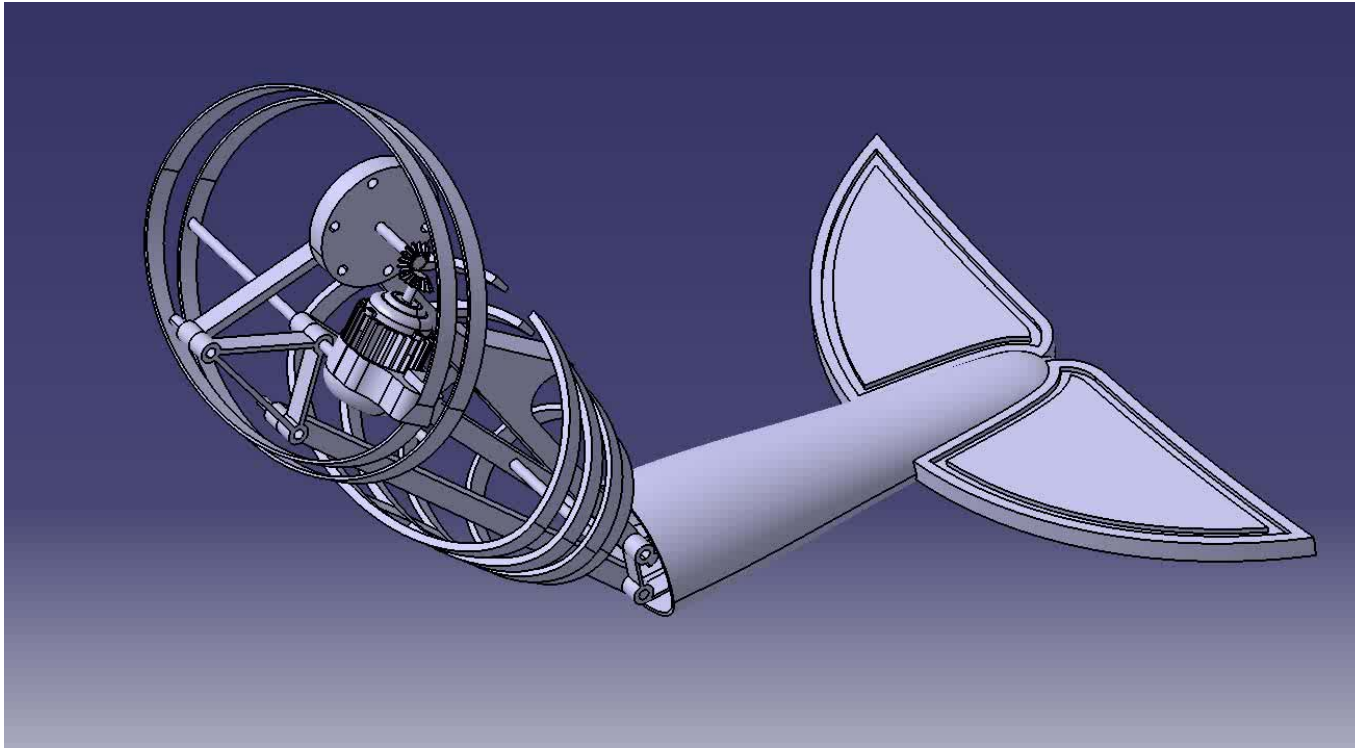
Rear part of model
with reference materials

01 Motor



Rear part of model
with reference materials

o2 tail; kinematics



Kinematic chain

*Bevel gear

crank 1

rocker 2

coupler 4 >link 8 (ground is counted)

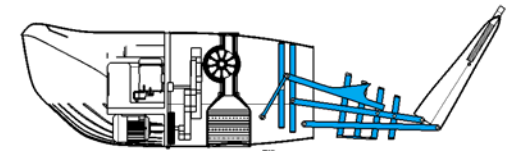
ground 1

joint 10

$$\text{DOF} = 24 - 20 - 3 = 1$$

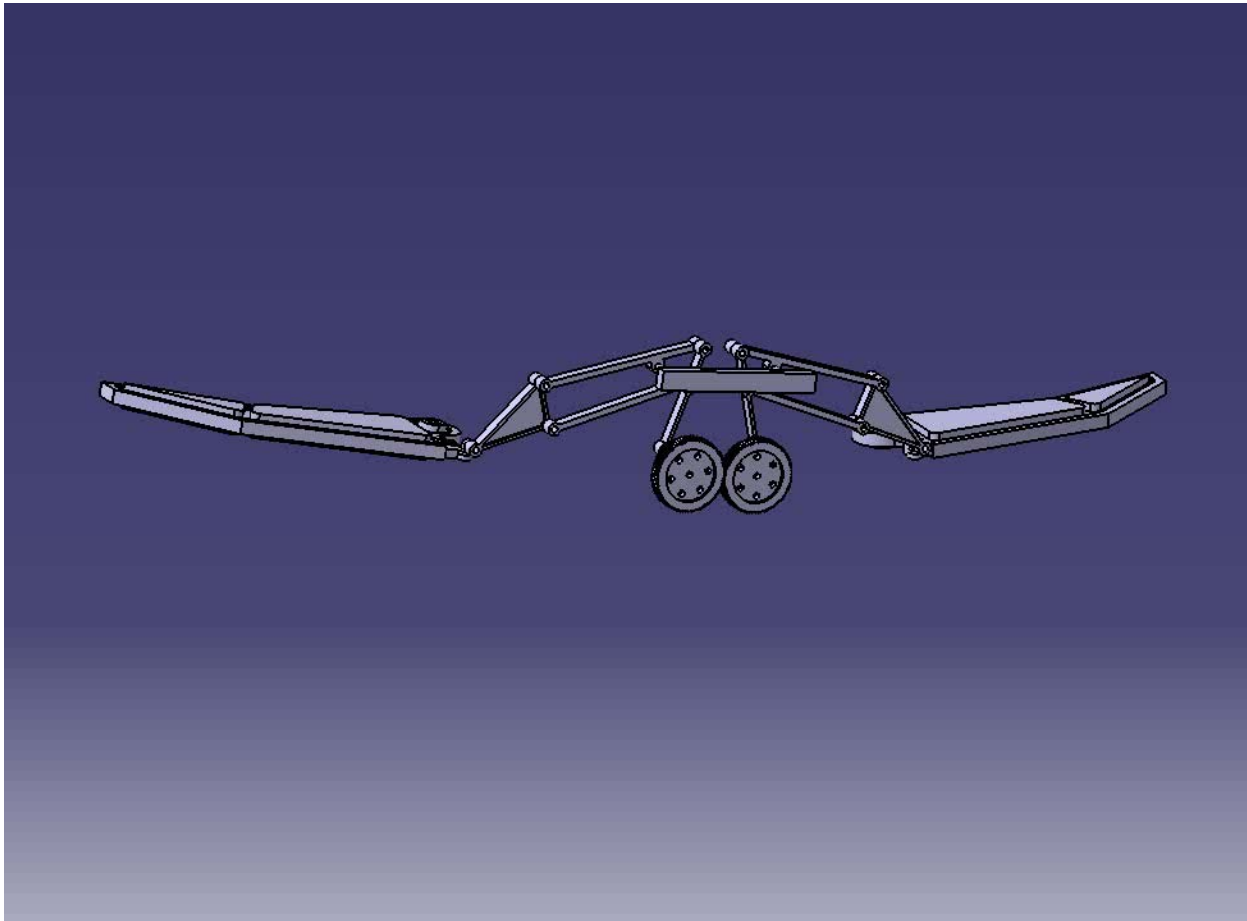
Ground revolute joint's DOF = 1

So DOF is zero



Rear part of model
with reference materials

o3 wing; kinematics



Kinematic chain

One side of wing

rocker1

coupler3 >link 6 (ground is counted)

ground 1

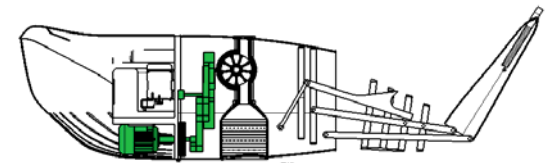
joint 7

$$\text{DOF} = 3\text{Link} - 2\text{Joint} - 3\text{Ground} = 18 - 14 - 3 = 1$$

revolute joint's DOF is 1

So DOF is zero

Connect with gear joint to the other side





CONTEXT

Necessity for our work

Front part of model
with reference materials

Rear part of model
with reference materials

Summary , Q&A

