

A close-up, low-angle photograph of a piano keyboard. The keys are arranged in a perspective that leads the eye from the bottom left towards the top right. The lighting is soft and warm, highlighting the texture of the keys and the metallic sheen of the piano's frame. The background is blurred, focusing attention on the keys.

오페라의 유령

2015012942 최원준

2015012988 한윤석

1. 제작 동기
2. 제작 순서 및 역할 분담
3. 피아노 모델링 및 Kinematics 과정
4. 손 모델링 및 Kinematics 과정

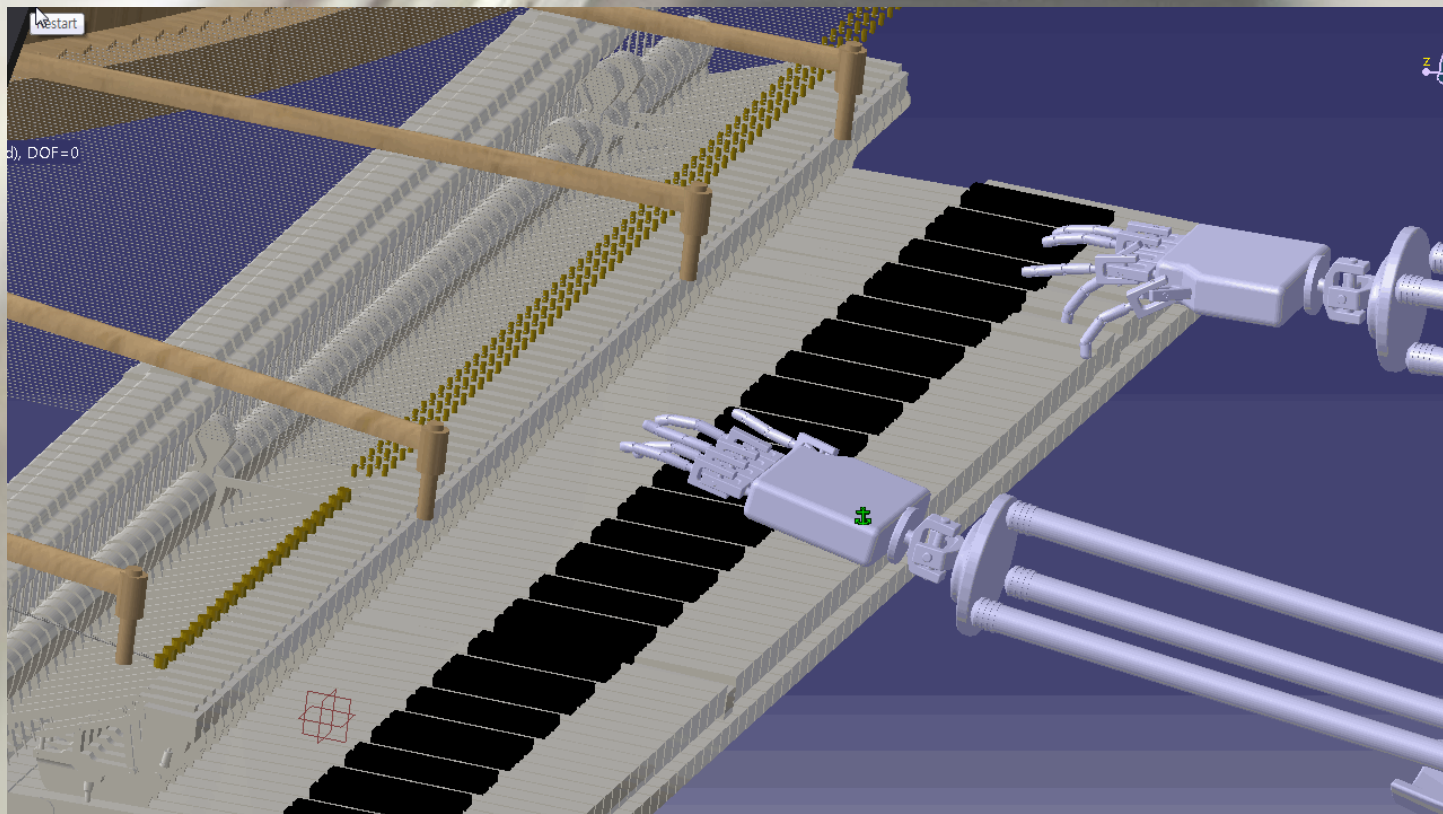
제작 순서

5월 16일 화요일부터 매 주 화요일, 금요일 만나서 제작 계획 세움

연주자 파트 - 최원준

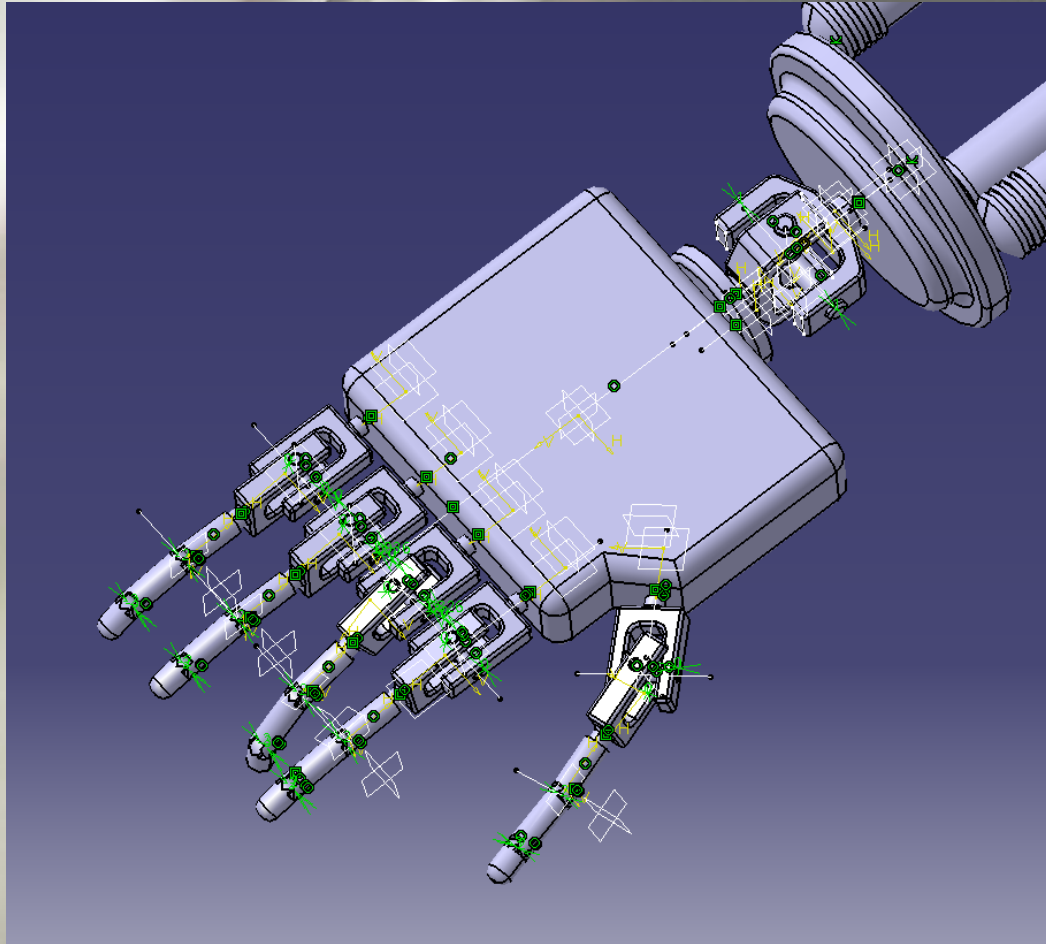
피아노 파트 - 한윤석

피아노 모델링 및 Kinematics



손 모델링 및 Kinematics

- 손 모델링 및 부여한 Joint



오른팔\손목관절움직이기 (Imported), DOF=0

오른팔\엄지손가락운동 (Imported), DOF=0

오른팔\검지손가락 (Imported), DOF=0

오른팔\중지운동 (Imported), DOF=0

오른팔\약지운동 (Imported), DOF=0

오른팔\새끼운동 (Imported), DOF=0

Product2.1\손목관절움직이기 (Imported), DOF=0

Product2.1\엄지손가락운동 (Imported), DOF=0

Product2.1\검지손가락 (Imported), DOF=0

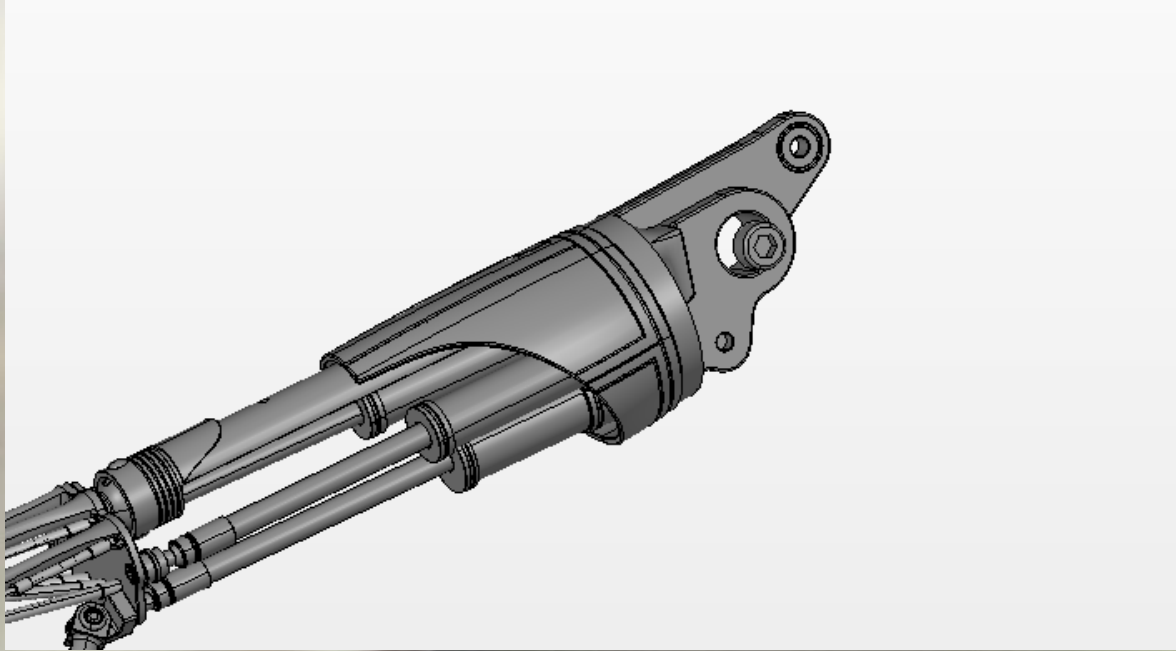
Product2.1\중지운동 (Imported), DOF=0

Product2.1\약지운동 (Imported), DOF=0

Product2.1\새끼운동 (Imported), DOF=0

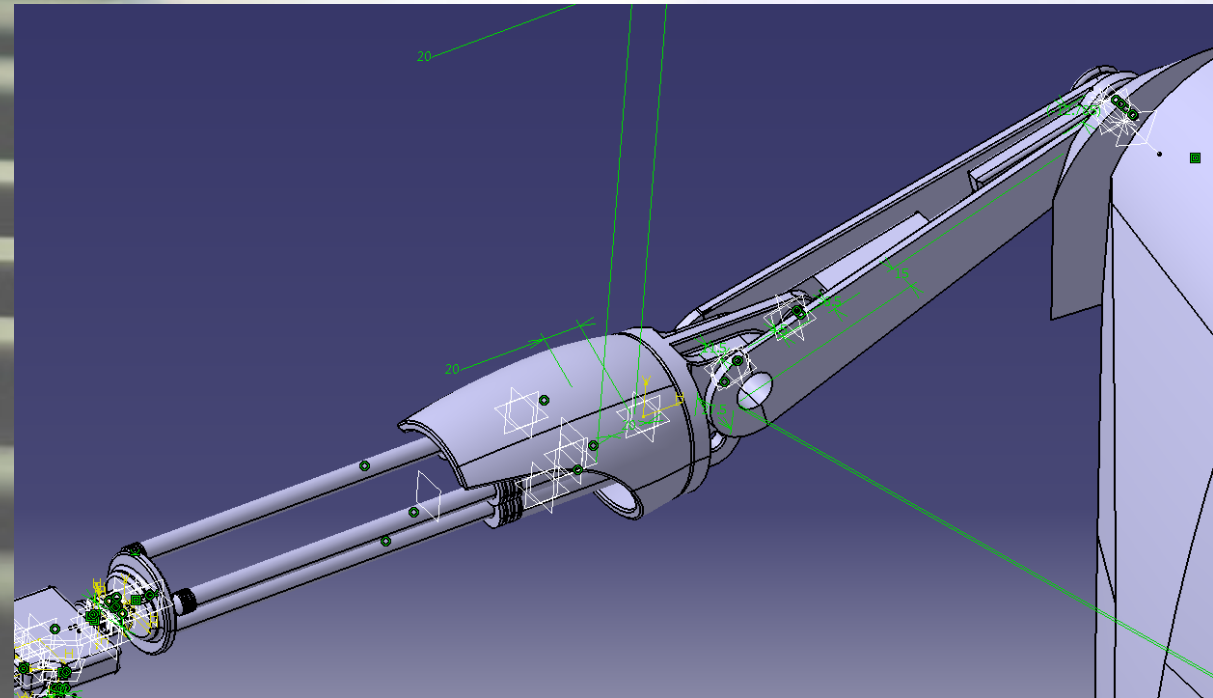
손 모델링 및 Kinematics

- 팔 모델링



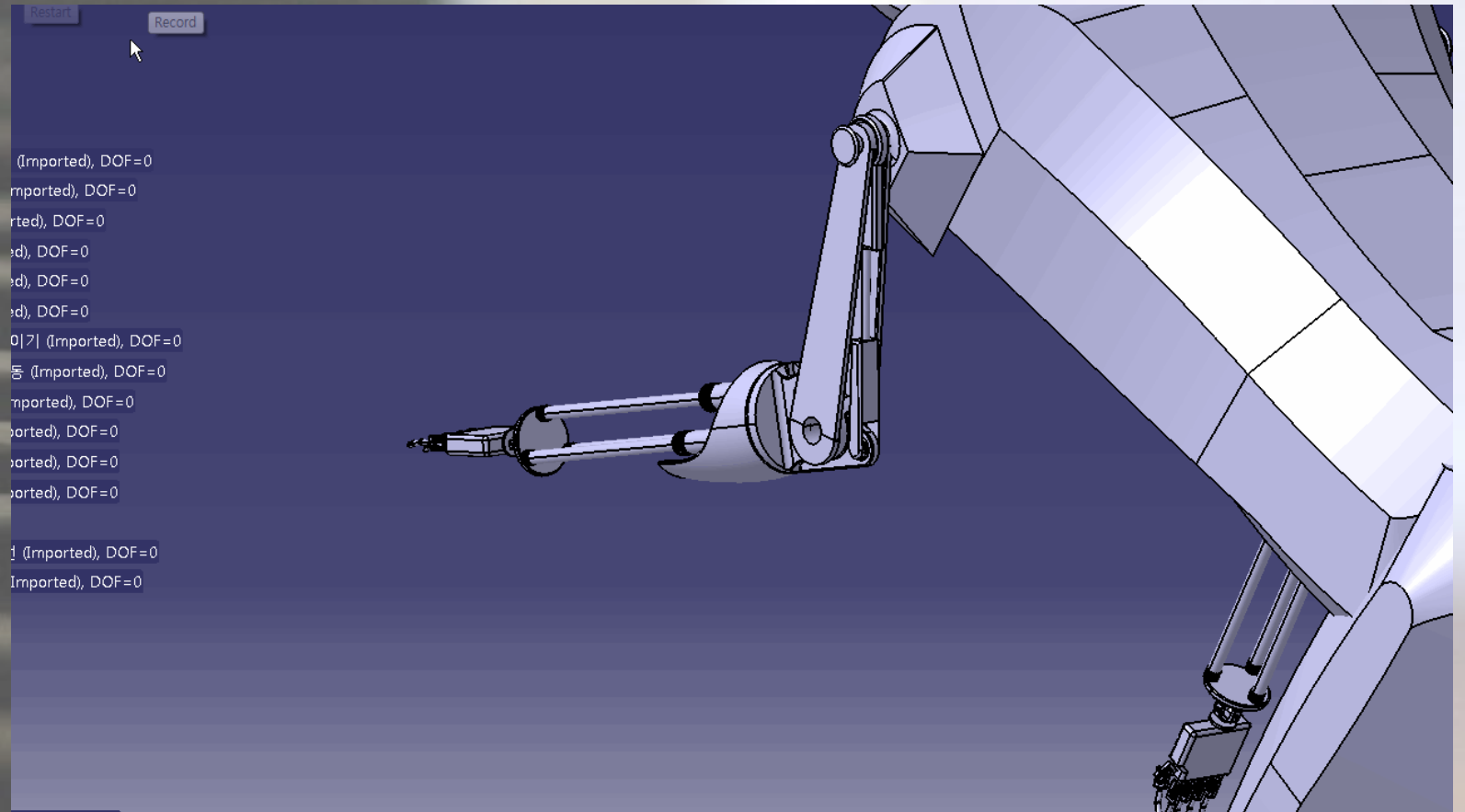
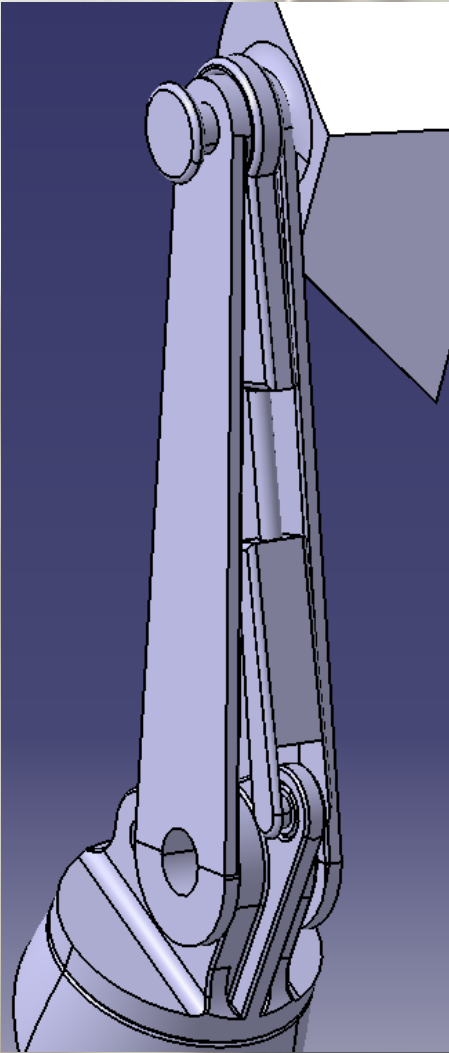
- 팔 제작에 참고한 모델.
- <https://grabcad.com/library/endoarm-stl-1>

• 실제 Catia 내의 Modelling



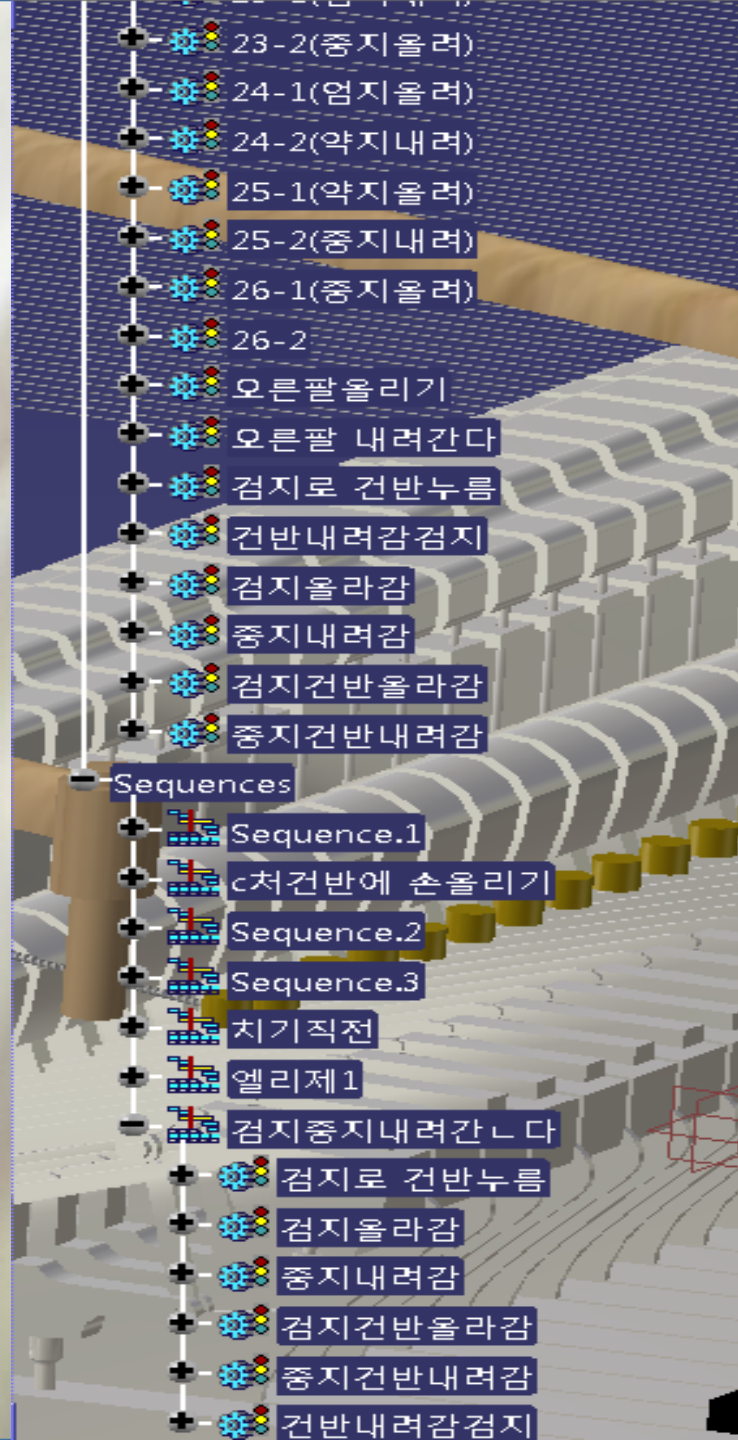
손 모델링 및 Kinematics

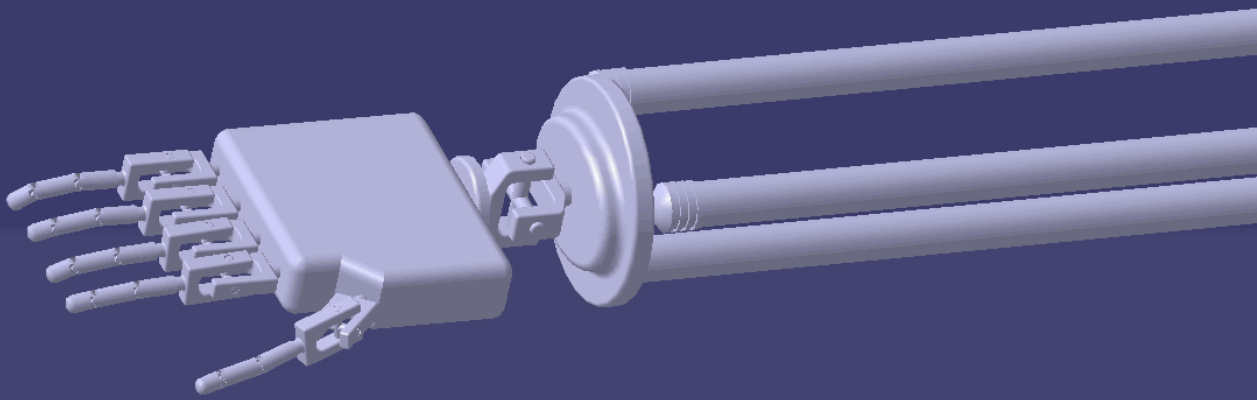
• 팔꿈치 Modelling



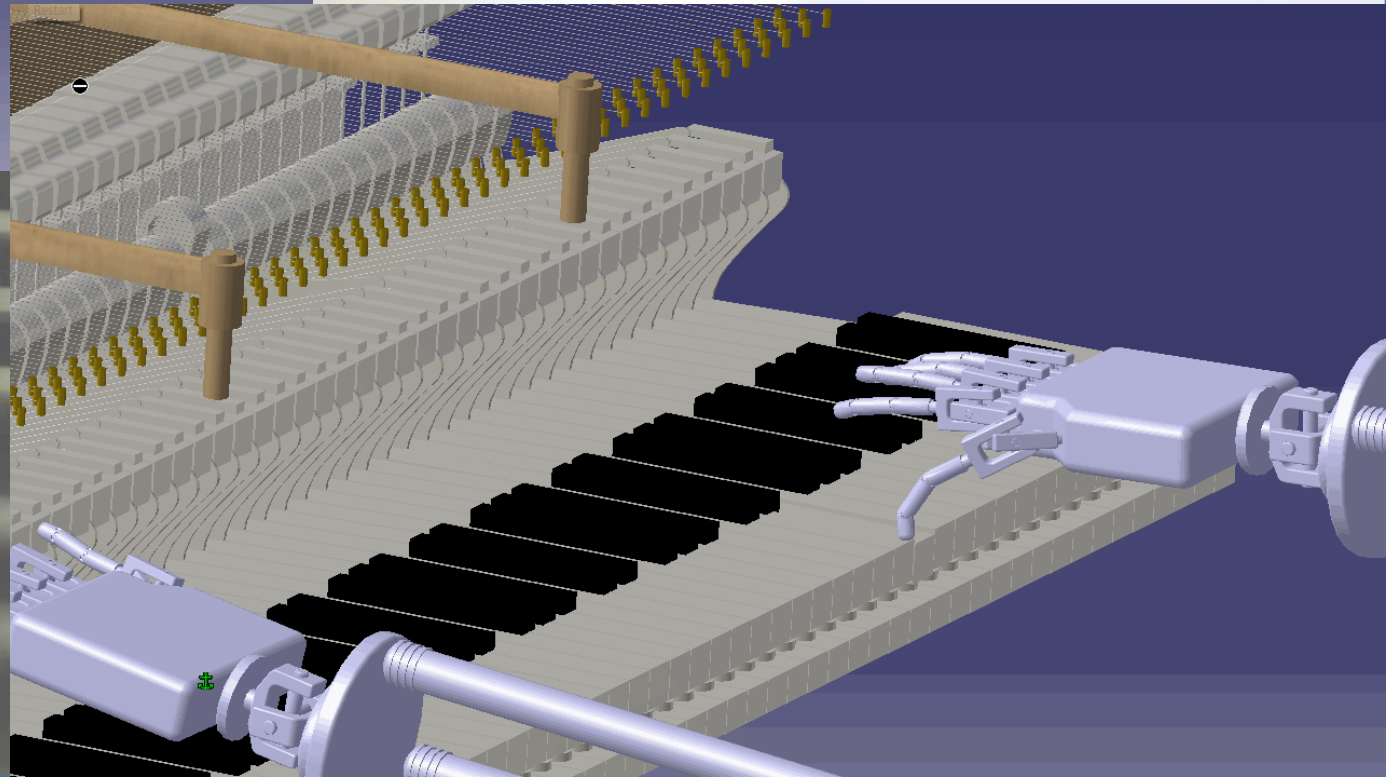
손 모델링 및 Kinematics

- 전체 모습 및 연주 Sequence





손 모델링 및 Kinematics





-감사합니다-